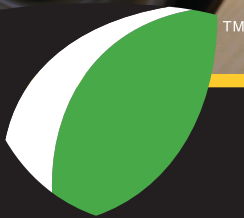




ALL TRAFFIC
SOLUTIONS



Connected Solutions for Better Traffic Safety Outcomes

SPEED, VOLUME AND ENFORCEMENT REPORTS

AllTrafficSolutions.com

All Your Traffic Safety Program Data In One Place

TraffiCloud® reports provide fast access to real-time traffic data and analytics to help you calm traffic, resolve complaints, improve traffic safety and meet your traffic management objectives.

- ✓ Resolve complaints and improve community relations
- ✓ Prioritize enforcement resources
- ✓ Demonstrate need for funding and on grant applications
- ✓ Reduce manual data collection and file management

EXTENDED SPEED SUMMARY REPORT

Summary with average and 85th percentile speed, average daily volume, 10-mph pace speed, high and low speed, display mode.



Extended Speed Summary Report

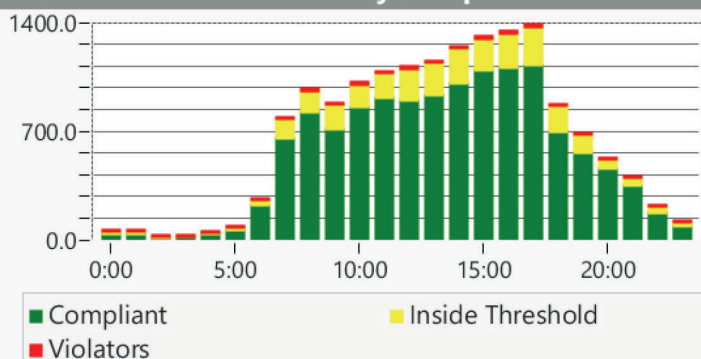
Generated by Marketing Demo from All Traffic Solutions Traffic Study Account on Aug 31, 20-- at 2:57:24 PM
 Site: Beside Mt Nittany United Methodist Church, NB
 Time of Day: 0:00 to 23:59
 Dates: 8/24/20-- to 8/30/20--

Overall Summary

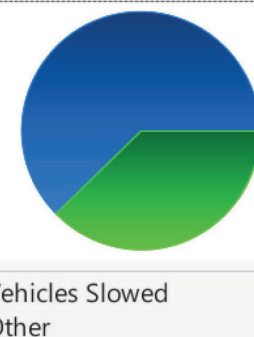
Total Days of Data: 7
 Speed Limit: 35
 Average Speed: 31.05
 50th Percentile Speed: 30.50
 85th Percentile Speed: 35.86
 Pace Speed Range: 26 to 36
 Minimum Speed: 5
 Maximum Speed: 57
 Display Status: Displayed Vehicle Speeds
 Average Volume per Day: 2235.0
 Total Volume: 15645

| Hours | Sign Mode | Speed Limit | Total # Vehicles | Total # Violations | % Violations | Avg # Vehicles | Avg # Violations | Minimum Speed Recorded | Maximum Speed Recorded | Avg Spd | 50% Spd | 85% Spd | Sign Effectiveness |
|-------|-----------|-------------|------------------|--------------------|--------------|----------------|------------------|------------------------|------------------------|---------|---------|---------|--------------------|
| 0:00 | Speed | 35 | 54.0 | 1.0 | 1.9 % | 6.8 | 0.1 | 9.0 | 47.0 | 31.0 | 29.3 | 35.0 | 59.5 % |
| 1:00 | Speed | 35 | 52.0 | 1.0 | 1.9 % | 8.7 | 0.2 | 22.0 | 46.0 | 32.0 | 30.4 | 34.4 | 70.4 % |
| 2:00 | Speed | 35 | 25.0 | 2.0 | 8.0 % | 3.6 | 0.3 | 26.0 | 46.0 | 36.7 | 35.6 | 39.7 | 63.7 % |
| 3:00 | Speed | 35 | 20.0 | 0.0 | 0.0 % | 3.3 | 0.0 | 18.0 | 44.0 | 30.8 | 29.3 | 34.5 | 65.0 % |
| 4:00 | Speed | 35 | 51.0 | 2.0 | 3.9 % | 8.5 | 0.3 | 18.0 | 50.0 | 32.2 | 30.5 | 35.6 | 68.8 % |

Volumes by Compliance



Sign Effectiveness



VOLUMES BY COMPLIANCE

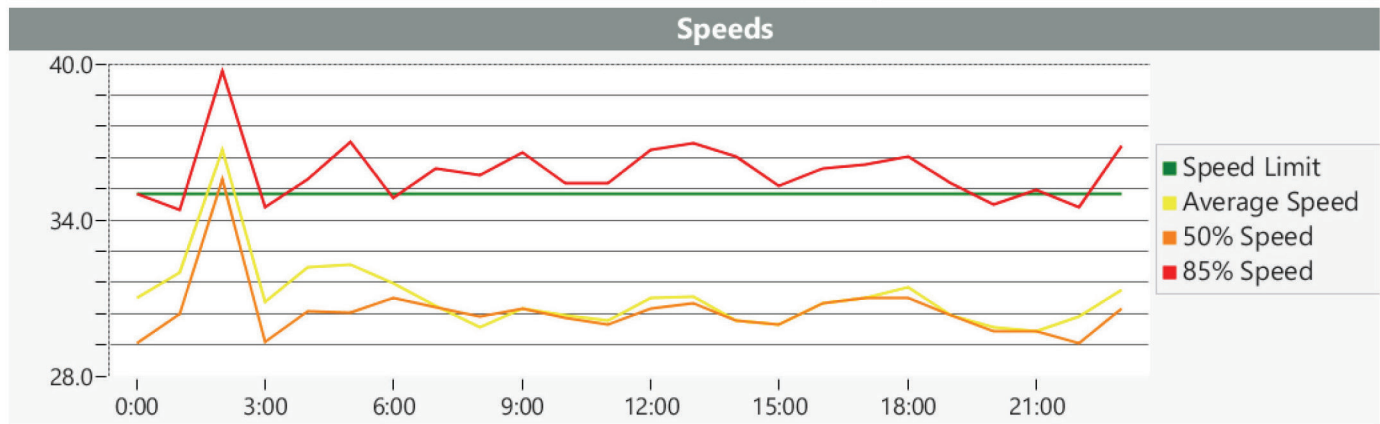
Traffic volume by compliance level by user-established threshold.

SIGN EFFECTIVENESS

Traffic sign effectiveness by percentage of vehicles slowed down.

SPEED LIMIT VS. AVERAGE SPEED

Actual speeds relative to the Speed Limit – 85%, 50% and Average. The 85th percentile speed is the speed under which 85% of the traffic is traveling.



ENFORCEMENT PRIORITIES REPORT

Prioritizes sites, times of the day and day of the week for the most effective enforcement activity. Prioritizes by the 85% speed or a weighted analysis skewed towards either speed or volume.



A sign of the future.™

Enforcement Priorities Report

Generated by Marketing Demo from All Traffic Solutions Traffic Study Account

on Aug 31, 20-- at 1:36:38 PM

Speed Bins: Size 0, Range 1 to 100

Rank Results By85% Speed

Site: Beside Mt Nittany United Methodist Church, NB

Time of Day: 0:00 to 23:59

Dates: 8/24/20-- to 8/30/20--

Violation Threshold: Speed Limit + 10

| # | Site | Day of Week | Time | Speed Limit | Average Speed | Average Violator Speed | 85% Speed | Average # Vehicles | Average # Violators |
|----|------------------------------------|-------------|---------------|-------------|---------------|------------------------|-----------|--------------------|---------------------|
| 1 | Beside Mt Nittany United Methodist | Saturday | 12:00 - 13:00 | 35 | 32.0 | 47.0 | 40.0 | 124.0 | 4.0 |
| 2 | Beside Mt Nittany United Methodist | Tuesday | 5:00 - 6:00 | 35 | 32.0 | 0.0 | 39.0 | 20.0 | 0.0 |
| 3 | Beside Mt Nittany United Methodist | Saturday | 13:00 - 14:00 | 35 | 33.5 | 51.0 | 38.5 | 112.0 | 1.0 |
| 4 | Beside Mt Nittany United Methodist | Sunday | 17:00 - 18:00 | 35 | 31.0 | 0.0 | 38.0 | 150.0 | 0.0 |
| 5 | Beside Mt Nittany United Methodist | Monday | 6:00 - 7:00 | 35 | 33.0 | 0.0 | 38.0 | 42.0 | 0.0 |
| 6 | Beside Mt Nittany United Methodist | Monday | 23:00 - 24:00 | 35 | 33.0 | 49.0 | 38.0 | 20.0 | 1.0 |
| 7 | Beside Mt Nittany United Methodist | Tuesday | 23:00 - 24:00 | 35 | 32.0 | 48.0 | 38.0 | 26.0 | 1.0 |
| 8 | Beside Mt Nittany United Methodist | Wednesday | 14:00 - 15:00 | 35 | 31.0 | 48.0 | 38.0 | 258.0 | 1.0 |
| 9 | Beside Mt Nittany United Methodist | Wednesday | 21:00 - 22:00 | 35 | 32.0 | 47.0 | 38.0 | 81.0 | 3.0 |
| 10 | Beside Mt Nittany United Methodist | Thursday | 8:00 - 9:00 | 35 | 31.0 | 46.0 | 38.0 | 141.0 | 3.0 |

COMPLIANCE AND RISK REPORT

Volume of traffic in each compliance range by hour, day or week. Set thresholds for medium and high risk speeds to visualize compliance levels at a site.



A sign of the future.™

Compliance And Risk Report

Generated by Marketing Demo from All Traffic Solutions Traffic Study Account on Aug 31, 20-- at 1:35:04 PM

Speed Bins: Size 0, Range 1 to 100

Time View: By Hour (Avg Volumes)

Site: Beside Mt Nittany United Methodist Church, NB

Time of Day: 0:00 to 23:59

Dates: 8/24/20-- to 8/30/20

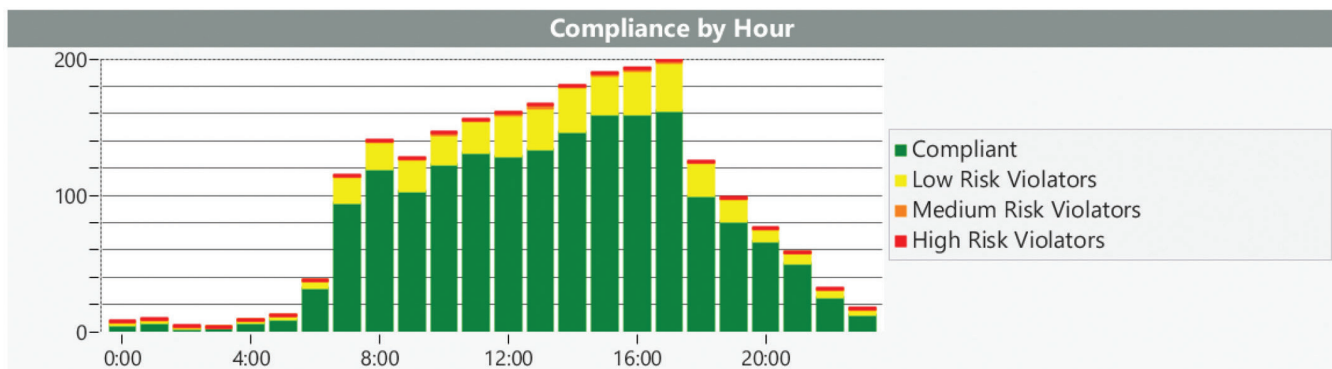
Medium Risk Threshold: Speed Limit + 10

High Risk Threshold: Speed Limit + 20

| Date/Time Range | Speed Limit | Mode | Compliant | Low Risk | Medium Risk | High Risk | Total Num Vehicles |
|-----------------|-------------|---------------|-----------|----------|-------------|-----------|--------------------|
| 0:00 | 35 | Speed Display | 5 | 2 | 0 | 0 | 7 |
| 1:00 | 35 | Speed Display | 7 | 2 | 0 | 0 | 9 |
| 2:00 | 35 | Speed Display | 2 | 2 | 0 | 0 | 4 |
| 3:00 | 35 | Speed Display | 3 | 1 | 0 | 0 | 3 |
| 4:00 | 35 | Speed Display | 7 | 2 | 0 | 0 | 9 |
| 5:00 | 35 | Speed Display | 9 | 2 | 0 | 0 | 12 |
| 6:00 | 35 | Speed Display | 32 | 5 | 0 | 0 | 38 |
| 7:00 | 35 | Speed Display | 95 | 19 | 1 | 0 | 114 |
| 8:00 | 35 | Speed Display | 119 | 19 | 1 | 0 | 140 |
| 9:00 | 35 | Speed Display | 103 | 23 | 1 | 0 | 127 |

COMPLIANCE BY HOUR

Compliance by volume is most telling when traffic volume varies significantly over the time range, such as when viewing hourly compliance and the night and day volumes are significantly different. At night, a higher percentage of vehicles are non-compliant but the volume is very low, so just a few cars can raise the percentage of non-compliance.



SPEED EFFECTIVENESS REPORT

Shows the percentage of vehicles slowed by a radar sign at a specific location by time of day – average final speed range vs. change in speed – for four speed ranges.



A sign of the future.™

Speed Effectiveness Report

Generated by Marketing Demo from All Traffic Solutions Traffic Study Account on Aug 31, 20-- at 1:20:16 PM

Speed Bins: Size 0, Range 21 to 100
 Time View: By Day of Week (Avg Volumes)
 Site: Beside Mt Nittany United Methodist

Church, NB

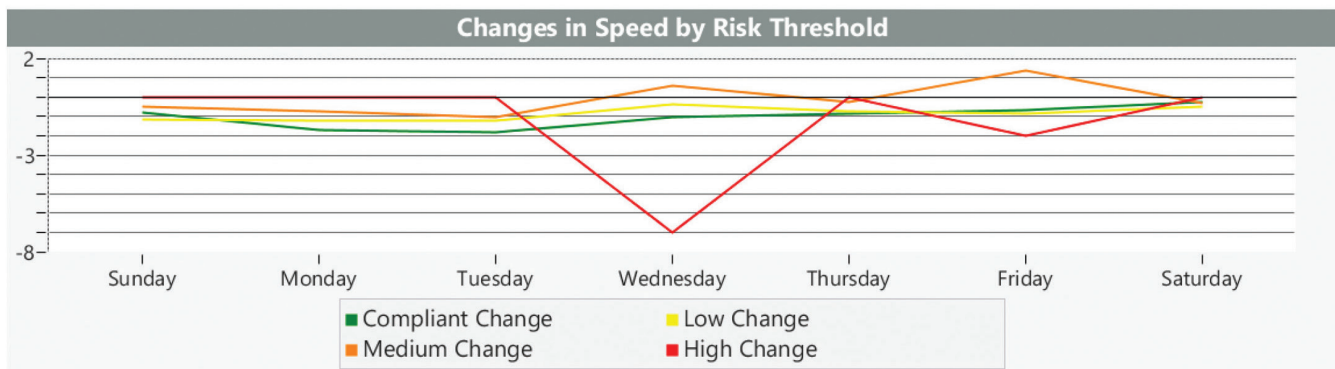
Time of Day: 0:00 to 23:59

Dates: 8/23/20-- to 8/29/20--

Medium Risk Threshold: Speed Limit + 10

High Risk Threshold: Speed Limit + 20

| Date/Time Range | Spd Limit | Sign Mode | Compliant Average Final Speed | Compliant Change In Speed | Low Risk Average Final Speed | Low Risk Change In Speed | Medium Risk Average Final Speed | Medium Risk Change In | High Risk Average Final Speed | High Risk Change In Speed | % of Vehicles Slowed by |
|-----------------|-----------|---------------|-------------------------------|---------------------------|------------------------------|--------------------------|---------------------------------|-----------------------|-------------------------------|---------------------------|-------------------------|
| Sunday | 35 | Speed Display | 29.4 | -0.8 | 38.4 | -1.1 | 47.9 | -0.5 | 0.0 | 0.0 | 63.3 % |
| Monday | 35 | Speed Display | 29.5 | -1.7 | 38.4 | -1.2 | 48.4 | -0.8 | 0.0 | 0.0 | 67.7 % |
| Tuesday | 35 | Speed Display | 29.0 | -1.8 | 38.7 | -1.2 | 47.5 | -1.0 | 0.0 | 0.0 | 66.2 % |
| Wednes | 35 | Speed Display | 29.8 | -1.0 | 38.4 | -0.4 | 49.7 | 0.6 | 56.0 | -7.0 | 58.7 % |
| Thursda | 35 | Speed Display | 29.7 | -0.9 | 38.6 | -0.7 | 47.6 | -0.3 | 0.0 | 0.0 | 56.0 % |
| Friday | 35 | Speed Display | 29.6 | -0.7 | 38.5 | -0.9 | 47.9 | 1.4 | 57.0 | -2.0 | 55.6 % |
| Saturda | 35 | Speed Display | 29.9 | -0.3 | 38.6 | -0.5 | 48.1 | -0.3 | 0.0 | 0.0 | 56.5 % |



VOLUME BY SPEED REPORT

Traffic counts by speed range, full day and time of day over selected date range with 5-mph resolution.



A sign of the future.™

Volume By Speed Report

Generated by Marketing Demo from All Traffic Solutions Traffic Study Account

on Aug 31, 20-- at 1:44:14 PM

Speed Bins: Size 5, Range 1 to 100

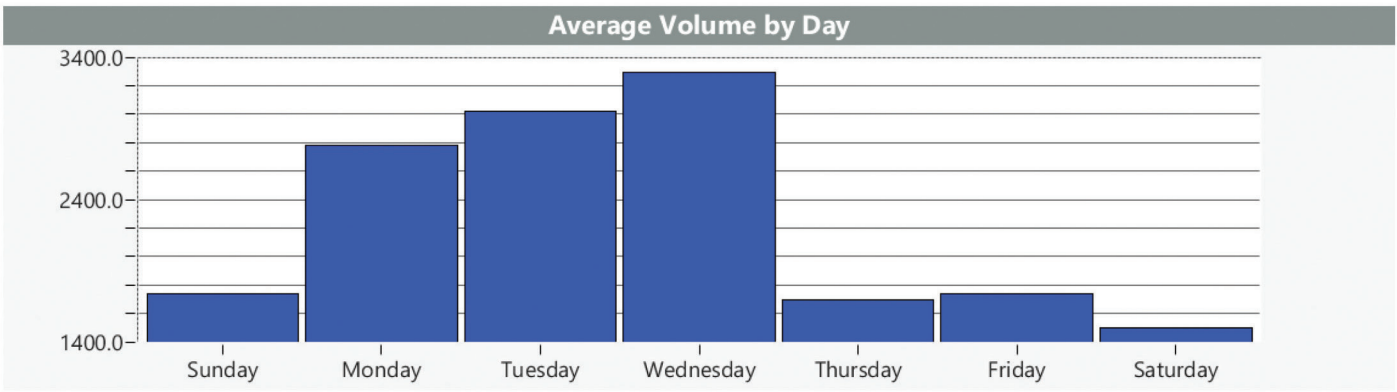
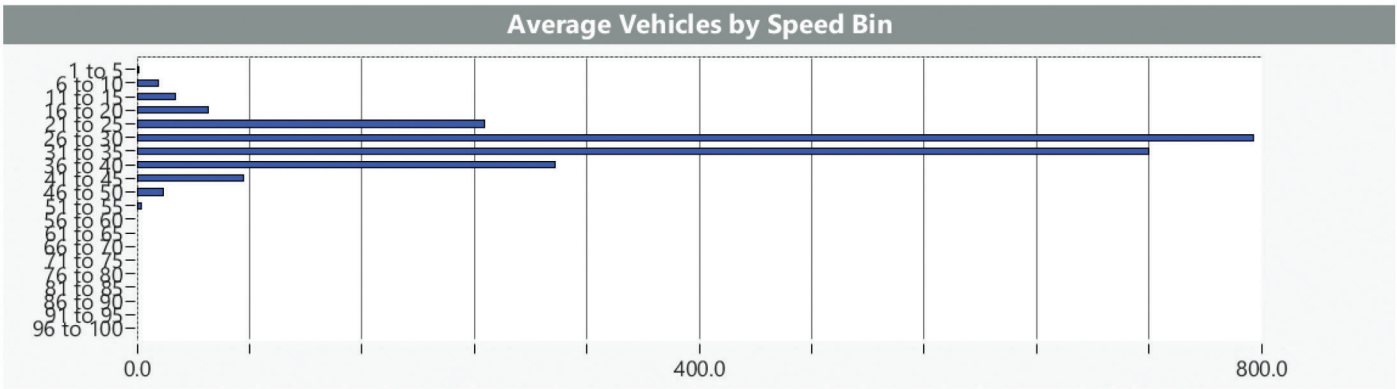
Time of Day: 0:00 to 23:59

Time View: By Day of Week (Avg Volumes)

Dates: 8/24/20-- to 8/30/20--

Site: Beside Mt Nittany United Methodist Church, NB

| Day of Week | Spd Limit | 1 to 5 | 6 to 10 | 11 to 15 | 16 to 20 | 21 to 25 | 26 to 30 | 31 to 35 | 36 to 40 | 41 to 45 | 46 to 50 | 51 to 55 | 56 to 60 | 61 to 65 | 66 to 70 | 71 to 75 | 76 to 80 | 81 to 85 | 86 to 90 | 91 to 95 | 96 to 100 | Avg Spd | Avg Num Vehicles |
|-------------|-----------|--------|---------|----------|----------|----------|----------|----------|----------|----------|----------|----------|----------|----------|----------|----------|----------|----------|----------|----------|-----------|---------|------------------|
| Sunday | 35 | 0 | 11 | 33 | 80 | 216 | 537 | 555 | 219 | 62 | 20 | 1 | 0 | 0 | 0 | 0 | 0 | 0 | 0 | 0 | 0 | 30.7 | 1734 |
| Monday | 35 | 1 | 29 | 29 | 45 | 280 | 986 | 921 | 376 | 86 | 22 | 5 | 0 | 0 | 0 | 0 | 0 | 0 | 0 | 0 | 0 | 31.1 | 2780 |
| Tuesday | 35 | 0 | 19 | 36 | 79 | 416 | 1155 | 864 | 333 | 96 | 20 | 1 | 0 | 0 | 0 | 0 | 0 | 0 | 0 | 0 | 0 | 30.9 | 3019 |
| Wednesday | 35 | 2 | 27 | 38 | 47 | 374 | 1184 | 1057 | 431 | 105 | 24 | 3 | 0 | 0 | 0 | 0 | 0 | 0 | 0 | 0 | 0 | 31.1 | 3292 |
| Thursday | 35 | 0 | 7 | 20 | 37 | 134 | 618 | 561 | 229 | 70 | 14 | 2 | 0 | 0 | 0 | 0 | 0 | 0 | 0 | 0 | 0 | 31.2 | 1692 |
| Friday | 35 | 2 | 4 | 14 | 41 | 180 | 621 | 557 | 239 | 60 | 19 | 3 | 1 | 0 | 0 | 0 | 0 | 0 | 0 | 0 | 0 | 30.5 | 1741 |
| Saturday | 35 | 5 | 8 | 16 | 30 | 131 | 460 | 527 | 249 | 55 | 13 | 3 | 0 | 0 | 0 | 0 | 0 | 0 | 0 | 0 | 0 | 31.5 | 1497 |
| Avg # | | 1 | 15 | 27 | 51 | 247 | 794 | 720 | 297 | 76 | 19 | 3 | 0 | 0 | 0 | 0 | 0 | 0 | 0 | 0 | 0 | 31 | 2251 |



VOLUME BY TIME REPORT

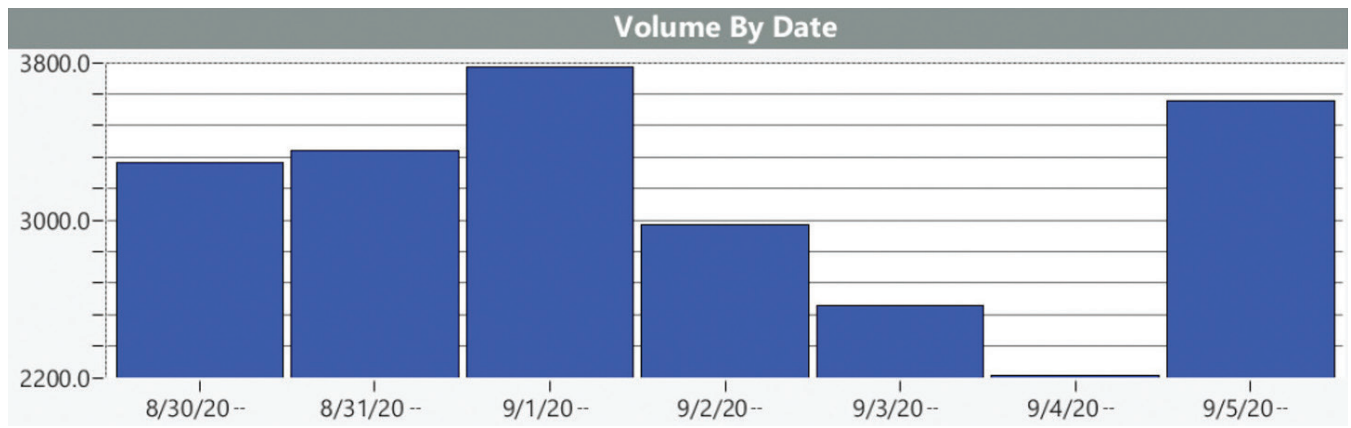
Average number of vehicles by date and time.



Volume By Time Report

Generated by Marketing Demo from All Traffic Solutions Traffic Study Account
 on Sep 6, 20-- at 12:22:57 PM
 Speed Bins: Size 0, Range 1 to 100
 Time View: By Date (Total Volumes)
 Site: Beside Mt Nittany United Methodist Church, NB
 Time of Day: 0:00 to 23:59
 Dates: 8/30/20-- to 9/5/20--

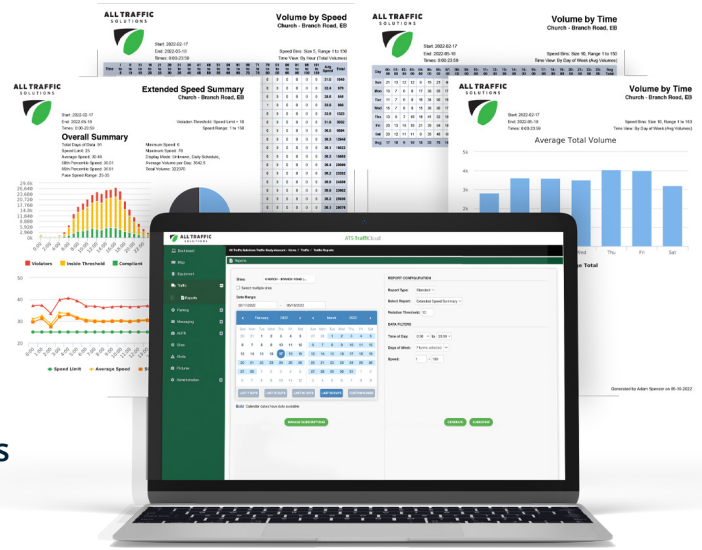
| Date | 0:00 | 1:00 | 2:00 | 3:00 | 4:00 | 5:00 | 6:00 | 7:00 | 8:00 | 9:00 | 10:00 | 11:00 | 12:00 | 13:00 | 14:00 | 15:00 | 16:00 | 17:00 | 18:00 | 19:00 | 20:00 | 21:00 | 22:00 | 23:00 | Total Num Vehicles |
|----------------|------------|-----------|-----------|-----------|-----------|------------|------------|------------|------------|------------|-------------|-------------|-------------|-------------|-------------|-------------|-------------|-------------|-------------|-------------|------------|------------|------------|------------|--------------------|
| 8/30/20-- | 9 | 6 | 4 | 4 | 16 | 17 | 59 | 159 | 171 | 158 | 184 | 196 | 279 | 214 | 258 | 297 | 333 | 312 | 193 | 168 | 109 | 81 | 41 | 24 | 3292 |
| 8/31/20-- | 5 | 2 | 13 | 2 | 9 | 27 | 65 | 154 | 175 | 177 | 195 | 207 | 235 | 259 | 268 | 291 | 329 | 318 | 183 | 158 | 139 | 66 | 51 | 22 | 3350 |
| 9/1/20-- | 8 | 13 | 4 | 7 | 11 | 26 | 55 | 174 | 205 | 232 | 263 | 239 | 287 | 232 | 297 | 336 | 335 | 307 | 216 | 170 | 135 | 84 | 85 | 53 | 3774 |
| 9/2/20-- | 29 | 7 | 20 | 5 | 12 | 12 | 36 | 74 | 149 | 223 | 227 | 214 | 187 | 174 | 201 | 245 | 280 | 260 | 163 | 146 | 123 | 67 | 75 | 49 | 2978 |
| 9/3/20-- | 35 | 6 | 13 | 7 | 4 | 14 | 13 | 47 | 80 | 119 | 194 | 242 | 267 | 239 | 223 | 205 | 203 | 166 | 111 | 98 | 115 | 70 | 56 | 40 | 2567 |
| 9/4/20-- | 14 | 6 | 3 | 7 | 11 | 8 | 17 | 33 | 59 | 109 | 155 | 175 | 175 | 204 | 193 | 222 | 156 | 190 | 138 | 145 | 100 | 41 | 25 | 21 | 2207 |
| 9/5/20-- | 14 | 4 | 2 | 6 | 10 | 21 | 78 | 163 | 226 | 225 | 279 | 269 | 264 | 268 | 239 | 294 | 307 | 312 | 193 | 183 | 119 | 82 | 26 | 23 | 3607 |
| Total # | 114 | 44 | 59 | 38 | 73 | 125 | 323 | 804 | 106 | 124 | 1497 | 1542 | 1694 | 1590 | 1679 | 1890 | 1943 | 1865 | 1197 | 1068 | 840 | 491 | 359 | 232 | 21775 |



Access All Your Traffic Safety Devices and Data in One Place with TraffiCloud®

TraffiCloud is patented, cloud-based software for managing all your traffic safety data and equipment securely from any internet connection.

Take a demo of TraffiCloud and discover the benefits of automated traffic management. Learn more at Alltrafficsolutions.com/solutions/trafficloud



Equipment Management

- No more driving to equipment to monitor, check batteries or program
- Check status and change settings from any Internet-connected device
- Send a single message to multiple signs at once



Alerts

- Specify who to notify when certain conditions occur
- Know immediately about low batteries, high speeds, tampering, congestion and more



Mapping

- Manage your entire program through an intuitive visual interface
- Interactive map provides a window to all system information



Reporting

- Save time collecting, compiling and distributing information
- Identify trends to allocate resources and be proactive
- Schedule reports for recurring email delivery to whomever you designate



Image Management

- Achieve greater awareness with alarms or by requesting generated images*
- Capture images based on speed, tampering, time intervals or upon request
- Review, edit, print and act on useful images

*Images can be used to identify vehicle make and color but are not ALPR quality



Premier Care Support Plan

- Get a perpetual warranty and real-time remote diagnostics with your TraffiCloud subscription
- 50% discount on repairs due to accidental damage or vandalism
- 50% off equipment batteries

All Traffic Solutions products are made in the USA in compliance with both the Buy America Act and the Buy American Act. All Traffic Solutions is a BuyBoard vendor for the BuyBoard National Purchasing Cooperative. We can provide Sole Source documentation for any products connected to TraffiCloud. A complete list of purchase options can be found on our website.

For more information visit us online: AllTrafficSolutions.com

 sales@alltrafficsolutions.com  Call 866.366.6602

All Traffic Solutions. 14201 Sullyfield Circle, Suite 300, Chantilly, VA 20151

©All Traffic Solutions TraffiCloud leverages our patented technology (US Patents 8417442; 8755990; 9070287; 9411893) to deliver unique cloud-based management, features and functionality. TraffiCloud is a registered trademark of All Traffic Solutions.

