

All Traffic Solutions: Product Presentation

ALL TRAFFIC
SOLUTIONS



TRUSTED BY 6,000+ ORGANIZATIONS

in all 50 States



Law Enforcement



Federal



Emergency Management



Large Venues



Health Departments



Public Works



Transportation Departments



Traffic Engineering



Education



Corporate Campuses

ALL TRAFFIC
SOLUTIONS



20+ Years Helping Customers Manage Traffic and Improve Safety



City of Dallas



CITY of BOSTON 

**ALL TRAFFIC
SOLUTIONS**

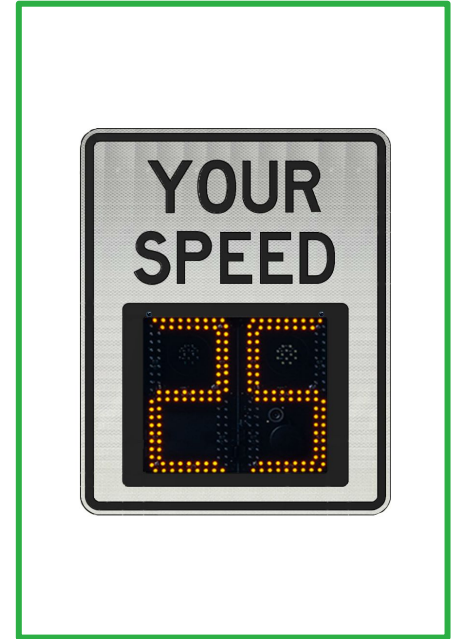


Shield 12 Radar Speed Sign

- **Dimensions:** 13.50 in. H x 15.50 in. W x 3.12 in. D
- **Digit dimensions:** 12 in. H x 6 in. W
- **Weight, without battery:** 12 lb. (including mount)



Shield 12 Radar Speed Sign

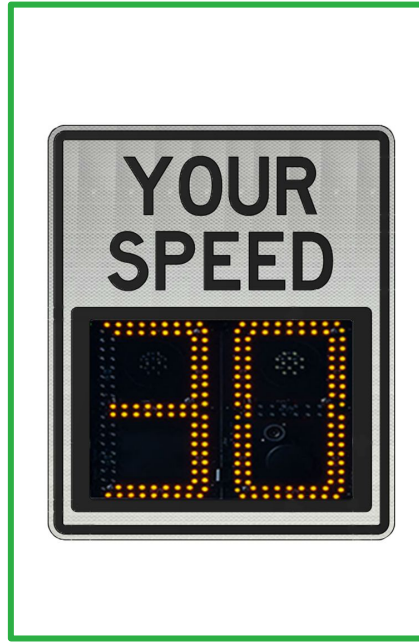


Shield 15 Radar Speed Sign

- **Dimensions:** 17 in. H x 24 in. W x 3.12 in. D
- **Digit dimensions:** 15 in. H x 8 in. W
- **Weight, without battery:** 18 lb. (including mount)



Shield 15 Radar Speed Sign



Use Shield to:

- **Enhance long-term traffic safety** (signs are weatherproof and last for up to a decade or longer)
- **Reduce speeding and keep drivers mindful** of how fast they are traveling
- **Resolve speeding complaints** by quickly & easily deploying signs in desired locations and moving them as needed
- **Make school zones safer**
- **Conduct hassle-free traffic studies**
- **Identify trends** in traffic volume and speed
- **Pinpoint where and when speeding occurs**
- **Determine where additional speed enforcement measures may be needed** (patrols, speed limit changes, etc.)



SpeedAlert 18 Radar Message Sign

- **Dimensions:** 20 in. H x 30 in. W x 2.74 in. D
- **Digit dimensions:** One to two lines
 - 1 Line: 10.25 in. H x 5.75 in. W characters, four per line
 - 2 Lines: 7 in. H x 4 in. W characters, six per line
- **Weight, without battery:** 29 lb.



SpeedAlert 18 Radar Message Sign



SpeedAlert 24 Radar Message Sign

- **Dimensions:** 28 in. H x 60 in. W x 1.62 in. D
- **Digit dimensions:** One to three lines
 - 1 Line: 24 in. H x 12.50 in. W characters, four per line
 - 2 Lines (A): 10.25 in. H x 5.75 in. W characters, eight per line
 - 2 Lines (B): (1) 7 in. H x 4 in. W characters, 12 per line (2) 10.25 in. H x 5.75 in. W characters, eight per line
 - 3 lines: 7 in. H x 4 in. W characters, 12 per line
- **Weight, without battery:** 43 lb.

ALL TRAFFIC
SOLUTIONS



SpeedAlert 24 Radar Speed and Message Sign



Use SpeedAlert to:

- **Reduce speeding & improve overall traffic safety wherever needed**— trailers can be easily towed by any size vehicle with a standard 2" receiver hitch
- **Share speed-dependent messaging** to warn speeding drivers to slow down and thank compliant drivers for traveling safely
- **Gather speed & traffic volume data**, even while in message mode (for stealth traffic studies)
 - Use data to resolve speeding complaints, determine speed enforcement priorities, and more
- **Share custom messages** about traffic pattern changes, local events, safety alerts, and more
- **Carry out traffic safety campaigns**
- **Make school zones safer**



InstAlert 18 Variable Message Sign

- **Dimensions:** 20 in. H x 30 in. W x 2.74 in. D
- **Digit dimensions:** One to two lines
 - 1 Line: 10.25 in. H x 5.75 in. W characters, four per line
 - 2 Lines: 7 in. H x 4 in. W characters, six per line
- **Weight, without battery:** 29 lb.



InstAlert 18 Portable Variable Message Sign



InstAlert 24 Variable Message Sign

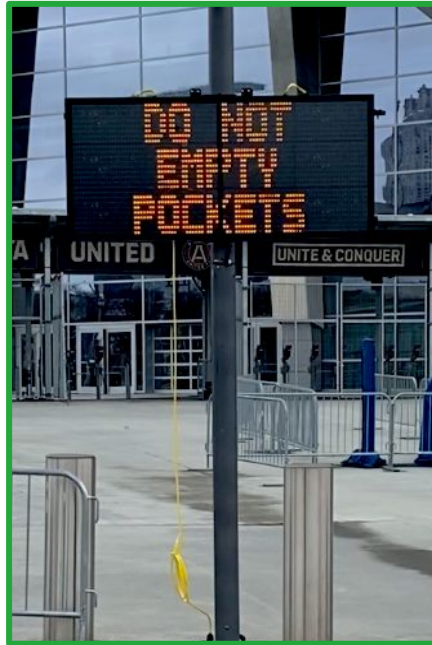
- **Dimensions:** 28 in. H x 60 in. W x 1.62 in. D
- **Digit dimensions:** One to three lines
 - 1 Line: 24 in. H x 12.50 in. W characters, four per line
 - 2 Lines (A): 10.25 in. H x 5.75 in. W characters, eight per line
 - 2 Lines (B): (1) 7 in. H x 4 in. W characters, 12 per line (2) 10.25 in. H x 5.75 in. W characters, eight per line
 - 3 Lines: 7 in. H x 4 in. W characters, 12 per line
- **Weight:** 43 lb.



Only folding variable message sign on the market



InstAlert 24 Portable Variable Message Sign



Use InstAlert to:

- **Guide drivers to available parking** at events and other points of interest
- **Promote upcoming events**
- **Direct traffic** to keep it flowing smoothly
- **Notify drivers** of road closures, hazards, or detours
- **Rapidly share** emergency alerts
- **Share traffic safety campaign messaging**
- **Post health and safety information & resources**



[InstAlert SetUp Video](#)

ATS 5 Trailer

- **Dimensions:** 90 in. H x 62.50 in. W x 61.50 in. D
- **Trailer Weight:**
 - 620 lb. with 225Ah battery capacity and SpeedAlert/InstAlert 18
 - 760 lb. with 450Ah battery capacity and SpeedAlert/InstAlert 24



ATS 5 Trailer



ATS 3 Trailer

- **Dimensions:** 84.40 in. H x 56.43 in. W x 88.37 in. D
- **Trailer Weight:** 475 lb. with integrated solar system and SpeedAlert 18



ATS 3 Trailer



ATS 5 and ATS 3 Uses

Mobility for your ATS signs to:

- Calm traffic and increase speed awareness
- Conduct traffic studies
- Resolve speeding complaints
- Communicate to motorists and pedestrians
- Redirect traffic during accidents or events



[ATS 5 w/ SA24 In Action - Video](#)

ATS 5 FLEX Trailer

- **Dimensions:** 66.50 in. H x 62.50 in. W x 61.50 in. D (stowed)
- **190 Trailer Weight:** 1,100 lb. with 900Ah battery capacity
- **380 Trailer Weight:** 1,200 lb. with 900Ah battery capacity

Rapidly deploy the tech tools you need wherever you need them, with extended runtime.

The ATS 5 FLEX Trailer provides a portable solution to power technology such as AI cameras, Sensors, Hazmat Readers, etc.



NEW TONIGHT

ARTIFICIAL INTELLIGENCE TRAFFIC CAMERAS
PRINCE GEORGE'S COUNTY CITIES LOOK TO NEW TECH FOR SAFER ROADS

ALL TRAFFIC
SOLUTIONS



190/380 ALPR Camera-Ready Trailers

- **Dimensions:** 66.50 in. H x 62.50 in. W x 61.50 in. D (stowed)
- **190 Trailer Weight:** 1,100 lb. with 900Ah battery capacity
- **380 Trailer Weight:** 1,200 lb. with 900Ah battery capacity



ALPR Camera-Ready Trailer Partners



flock safety



ALPR Camera-Ready Trailer Designs



*Crossbar
mounting option*



*Camera
enclosure box
option*



*Recessed camera
compartment
option*



Surveillance-Ready Trailer

- **Dimensions:** 66.50 in. H x 62.50 in. W x 61.50 in. D (stowed)
- **Trailer Weight:** 1,224 lb. with 900Ah battery capacity and telescoping mast
- **Telescoping Mast Height:** 22 ft. including ground clearance



FLEX, ALPR Camera-ready, Surveillance-ready Trailer Uses

Mobility and Flexibility to Rapidly Deploy and Power the Technology You Need To:

- Calm traffic
- Direct traffic
- Share information
- **Power the technology of your choice**
(cameras, sensors)

ATS 5 FLEX

- Calm traffic
- Direct traffic
- Share information
- **Power the Automatic License Plate Reader system of your choice**

ALPR CAMERA-READY

- Calm traffic
- Direct traffic
- Share information
- **Power the surveillance camera system of your choice**

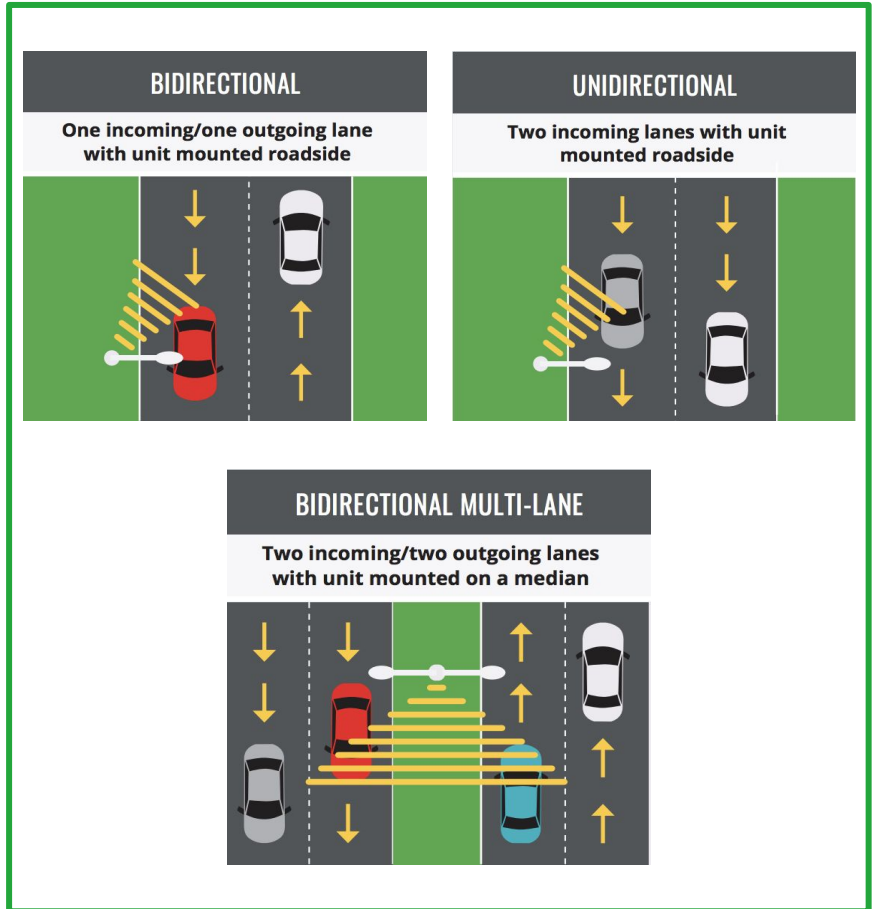
SURVEILLANCE-READY

ALL TRAFFIC
SOLUTIONS



Traffic Counter & Classifier Technology

- **Dimensions**
 - StatTrak: 6.80 in. H x 4.80 in. W x 5.30 in. D
 - StatTrak-E: 10 in. H x 7.76 in. W x 7.15 in. D
- **Weight, without batteries**
 - StatTrak: 3 lb.
 - StatTrak-E: 5 lb.
- **Runtime**
 - StatTrak: up to 2 weeks
 - StatTrak-E: up to 3 weeks



Use Traffic Counter and Classifiers to:

Run quick traffic studies

- Record vehicle counts, speeds, and classification
- Units with a TrafficCloud® automatically upload data to our secure online portal to access account sites in one place, and download customizable traffic reports that display data in clear-cut charts, graphs, and tables.
 - Export reports as PDF, Excel, CSV, or HTML files for easy sharing!
- Data can also be retrieved locally if desired.



[StatTrak
Installation Video](#)

[StatTrak-E
Overview Video](#)

TraffiCloud® Cloud-based Portal For Remote Equipment Management



Use TraffiCloud to:

- **Review your equipment location, location history, and statuses** through an interactive map
- **Update sign messages and settings remotely**
- **Schedule messages in advance** to display on specific days at specific times
- **Get real-time email & SMS alerts** for when signs' batteries run low, excessive speeding occurs, signs are tampered with, or signs change locations
- **Download ready-made traffic data reports** that display information in clear-cut charts, graphs, and tables

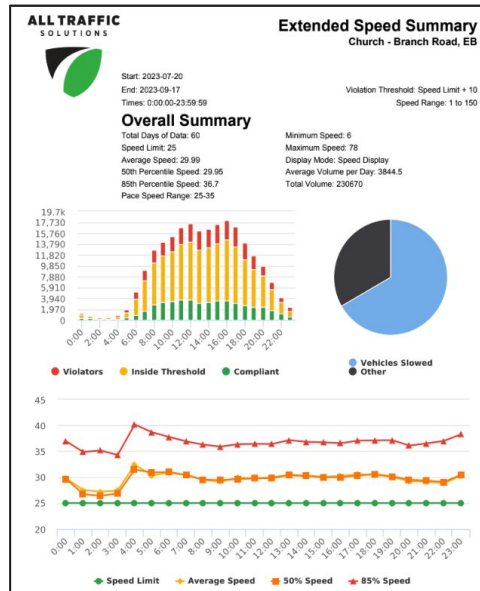


[TraffiCloud Overview Video](#)



TrafficCloud Reports

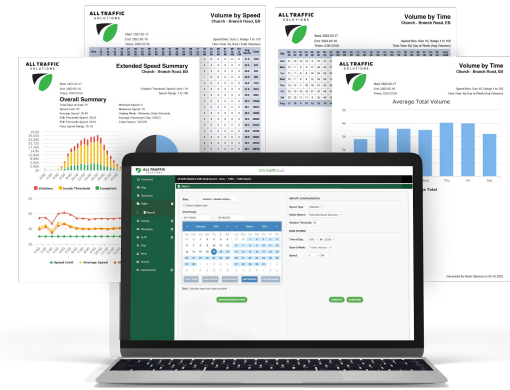
Get ready-made reports



ALL TRAFFIC SOLUTIONS
Extended Speed Summary
 Church - Branch Road, EB

Start: 2023-07-20
 End: 2023-09-17
 Times: 0:00:00-23:59:59
 Violation Threshold: Speed Limit + 10
 Speed Range: 1 to 150

Time	Sign Speed	Speed Limit	Total # Vehicles	Total # Violator	% Violator	Avg # Vehicles	Avg # Violators	Min Speed	Max Speed	Avg Speed	85% Speed	88% Speed	Sign Effectiveness
0:00	Speed Display	25	1196	509	25.9%	18.9	5.2	6	81	29.7	29.7	36.9	19.2%
1:00	Speed Display	25	894	263	21.7%	16.6	2.4	6	87	29.5	29.7	36.9	62.2%
2:00	Speed Display	25	611	117	19.1%	10.2	2.0	6	64	27.2	26.7	35.2	64.4%
3:00	Speed Display	25	554	135	24.4%	9.2	2.3	6	72	27.4	26.6	34.3	66.1%
4:00	Speed Display	25	844	316	33.9%	15.7	5.3	6	87	32.4	31.4	40.2	66.7%
5:00	Speed Display	25	1835	515	28.1%	30.6	8.8	6	64	30.3	30.9	38.7	66.2%
6:00	Speed Display	25	6108	1301	21.5%	85.1	21.7	6	63	30.9	31.0	37.8	68.2%
7:00	Speed Display	25	9116	1904	20.9%	151.9	31.7	6	66	30.4	30.4	36.9	66.8%
8:00	Speed Display	25	12091	2205	18.1%	211.5	38.3	6	59	29.4	29.5	36.3	65.0%
9:00	Speed Display	25	14123	2413	17.1%	235.4	40.2	6	69	29.2	29.4	35.9	66.2%
10:00	Speed Display	25	15261	2827	18.5%	254.0	47.1	6	68	29.9	29.6	36.4	68.1%
11:00	Speed Display	25	16845	3176	18.9%	289.8	52.9	6	68	29.8	29.6	36.4	66.4%
12:00	Speed Display	25	17508	3267	18.7%	291.8	56.0	6	64	30.0	29.6	36.4	66.0%
13:00	Speed Display	25	16225	3036	21.8%	279.3	58.3	6	69	30.3	30.4	37.1	67.8%
14:00	Speed Display	25	16521	3406	20.6%	275.5	58.9	6	69	30.3	30.2	36.8	68.2%
15:00	Speed Display	25	11427	3337	29.2%	205.5	63.0	6	60	30.1	30.1	36.7	66.2%
16:00	Speed Display	25	18302	3516	19.2%	301.0	59.6	6	68	30.2	30.0	36.6	66.5%
17:00	Speed Display	25	16979	3540	21.4%	283.0	60.7	6	62	30.6	30.3	37.0	66.6%
18:00	Speed Display	25	14051	3123	22.2%	234.2	52.1	6	61	30.4	30.6	37.1	66.9%
19:00	Speed Display	25	11672	2527	21.7%	194.5	42.1	6	61	30.0	30.1	37.1	67.8%
20:00	Speed Display	25	9792	1726	17.6%	163.2	28.8	6	63	29.2	29.5	36.1	66.8%
21:00	Speed Display	25	6851	1346	19.6%	114.2	22.4	6	60	29.1	29.3	36.5	64.7%
22:00	Speed Display	25	4109	863	21.0%	68.5	14.4	6	64	28.8	29.0	37.0	66.9%
23:00	Speed Display	25	2270	507	22.3%	37.4	10.0	6	78	30.3	30.4	38.3	68.9%
Total Volume			230670	48667	21.2%	3844.5	778.1	6	78	29.7	29.6	36.8	66.4%
Feedback			0	0	0.0%	0.0	0.0	N/A	N/A	N/A	N/A	N/A	N/A
Training			230670	48667	21.2%	3844.5	778.1	6	78	29.7	29.6	36.8	66.4%
Feedback													



TraffiCloud Reports

Example

ALL TRAFFIC
SOLUTIONS



Start: 2023-07-20

End: 2023-09-17

Times: 0:00:00-23:59:59

Compliance & Risk Report

Church - Branch Road, EB

Medium Risk Threshold: Speed Limit + 10

High Risk Threshold: Speed Limit + 20

Speed Range: 1 to 150

Time View: By Hour (Total Volumes)

Time	Speed Limit	Mode	Compliant	Low Risk	Medium Risk	High Risk	Total Num Vehicles
0:00	25	Speed Display	287	600	255	54	1196
1:00	25	Speed Display	303	428	180	23	934
2:00	25	Speed Display	216	278	99	18	611
3:00	25	Speed Display	199	220	122	13	554
4:00	25	Speed Display	136	492	246	70	944
5:00	25	Speed Display	404	916	451	64	1835
6:00	25	Speed Display	902	2905	1165	136	5108
7:00	25	Speed Display	1630	5582	1764	140	9116
8:00	25	Speed Display	2754	7642	2182	113	12691
9:00	25	Speed Display	3244	8466	2289	124	14123
10:00	25	Speed Display	3312	9102	2693	134	15241
11:00	25	Speed Display	3716	9953	3024	152	16845
12:00	25	Speed Display	3694	10457	3183	174	17508
13:00	25	Speed Display	3008	9704	3311	197	16220
14:00	25	Speed Display	3208	9917	3235	171	16531
15:00	25	Speed Display	3550	10340	3336	201	17427
16:00	25	Speed Display	3450	11096	3292	224	18062
17:00	25	Speed Display	3003	10336	3394	246	16979
18:00	25	Speed Display	2619	8309	2901	222	14051
19:00	25	Speed Display	2369	6776	2351	176	11672
20:00	25	Speed Display	2337	5729	1617	109	9792
21:00	25	Speed Display	1747	3758	1218	128	6851
22:00	25	Speed Display	1103	2143	770	93	4109
23:00	25	Speed Display	518	1155	521	76	2270
Total			47709	136304	43599	3058	230670

TraffiCloud Reports

Example

ALL TRAFFIC
SOLUTIONS



Start: 2023-07-20

End: 2023-09-17

Times: 0:00:00-23:59:59

Enforcement Priorities Report

Church - Branch Road, EB

Violation Threshold: Speed Limit +10

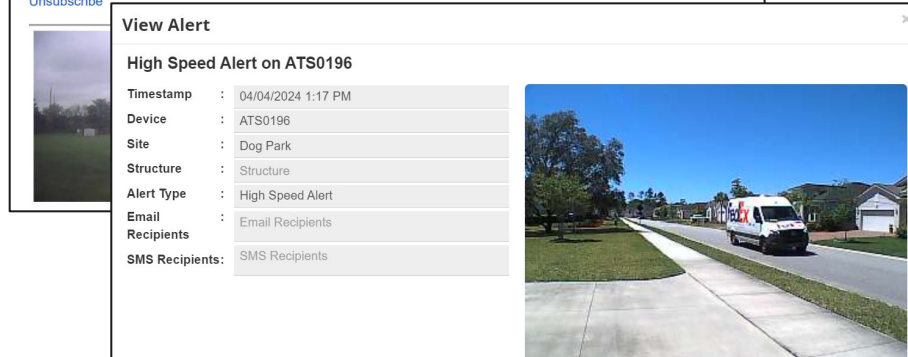
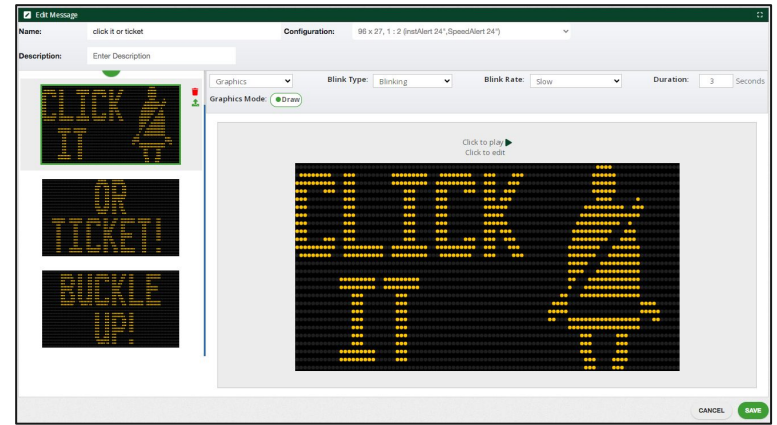
Speed Range: 1 to 150

Rank Results By: 85% Speed

#	Site	Day of Week	Time	Speed Limit	Average Speed	Average Violator Speed	85% Speed	Average # Vehicles	Average # Violators
1	Church - Branch Road, EB	Thu	5:00 - 6:00	25	30.3	41.1	39.6	36	11
2	Church - Branch Road, EB	Wed	23:00 - 24:00	25	30.6	41.2	39.0	38	10
3	Church - Branch Road, EB	Wed	5:00 - 6:00	25	31.0	40.6	39.0	41	12
4	Church - Branch Road, EB	Mon	23:00 - 24:00	25	29.8	41.6	38.7	27	7
5	Church - Branch Road, EB	Thu	23:00 - 24:00	25	29.6	40.2	38.6	33	10
6	Church - Branch Road, EB	Sun	0:00 - 1:00	25	31.5	40.4	38.5	37	12
7	Church - Branch Road, EB	Sat	17:00 - 18:00	25	31.1	40.0	38.4	245	65
8	Church - Branch Road, EB	Sat	23:00 - 24:00	25	30.4	40.3	38.3	67	18
9	Church - Branch Road, EB	Sat	14:00 - 15:00	25	31.3	39.8	38.3	245	64
10	Church - Branch Road, EB	Thu	6:00 - 7:00	25	31.5	40.1	38.3	111	31
11	Church - Branch Road, EB	Sun	16:00 - 17:00	25	31.7	40.3	38.3	233	62
12	Church - Branch Road, EB	Sun	6:00 - 7:00	25	31.5	40.7	38.3	32	8
13	Church - Branch Road, EB	Tue	5:00 - 6:00	25	29.6	40.1	38.1	38	10
14	Church - Branch Road, EB	Tue	23:00 - 24:00	25	31.1	40.7	38.1	24	6
15	Church - Branch Road, EB	Wed	22:00 - 23:00	25	30.2	39.9	38.1	65	18
16	Church - Branch Road, EB	Sun	15:00 - 16:00	25	31.2	39.9	38.1	242	62
17	Church - Branch Road, EB	Sat	6:00 - 7:00	25	30.5	40.2	38.1	49	13
18	Church - Branch Road, EB	Sun	7:00 - 8:00	25	30.2	40.7	38.0	53	13
19	Church - Branch Road, EB	Sat	19:00 - 20:00	25	30.4	40.0	38.0	179	44
20	Church - Branch Road, EB	Sun	17:00 - 18:00	25	31.2	39.8	38.0	208	54
21	Church - Branch Road, EB	Sat	12:00 - 13:00	25	31.0	39.6	37.9	264	68
22	Church - Branch Road, EB	Tue	6:00 - 7:00	25	31.5	39.8	37.9	108	30
23	Church - Branch Road, EB	Sat	13:00 - 14:00	25	30.9	39.5	37.9	253	63
24	Church - Branch Road, EB	Mon	5:00 - 6:00	25	30.6	40.3	37.8	32	8
25	Church - Branch Road, EB	Sun	23:00 - 24:00	25	29.8	40.7	37.8	27	7

TraffiCloud

- Create and share custom messages and graphics
- Get alerts via email or text for speeding, tampering, low battery levels, congestion and more



Premier Care Warranty

The most comprehensive warranty on the market



Premier Care covers any manufacturing defect on an ATS-manufactured unit during its lifespan, provided the unit is subscribed to Trafficcloud®.

- Receive ongoing hardware defect repairs
- 50% off on accidental damage or vandalism repairs
- 50% off on any additional accessories



For More Information:



866-366-6602



info@AllTrafficSolutions.com



AllTrafficSolutions.com

**ALL TRAFFIC
SOLUTIONS**

