

# Camera-Ready Trailers

All Traffic Solutions®



# Why ATS Trailers?

## More Power and More Options for Expanded Capability

Trusted by 6,000+ Law Enforcement Agencies, Municipalities, & More in all 50 States

ATS trailers are...

- Highly mobile
- Extremely versatile
- Durably built to last 10+ years
- Easy to use & deploy
- Made in the USA
- Backed by US-based customer support & industry-leading warranties



# LPR Camera-Ready Trailers

Multiple configurations are available to accommodate your choice of LPR cameras.

380W or 190W Solar Assist

Radar/Message Sign

Remote Sign Management

Extra Battery Box for extended runtime

Durable Design & Build

Highly Mobile for Quick Deployment



# LPR Camera-Ready Trailers

- Make it easy to move LPR cameras around as needed
- Reduce speeding & improve traffic safety
- Collect valuable speed & traffic volume data
- Share high-visibility messages with the public
- Are built for you to solve your challenges
- Can accommodate the LPR system of your choice



# Partnerships

We partner with leading LPR camera providers to seamlessly install their tech onto our mobile trailers and deliver you a fully integrated solution tailored to your needs.



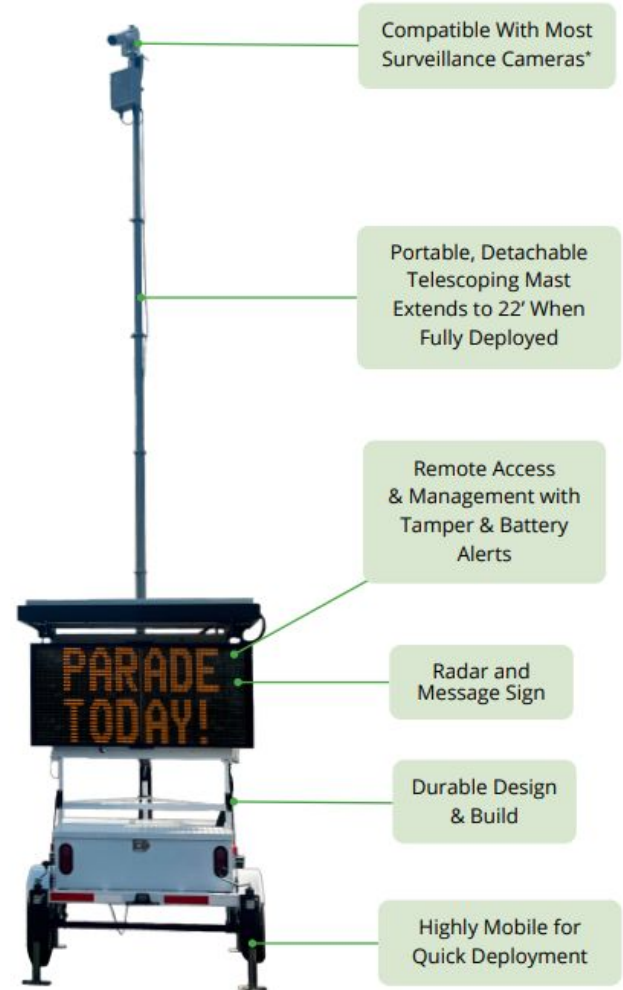
MOBOTIX

flock safety



# Surveillance-Ready Trailers

- Easily move surveillance cameras around as needed
- Share high-visibility messages
- Improve safety at special events and in high-crime areas
- Offers plug-and-play compatibility with most surveillance cameras
- Includes PoE ++ injector and armored ethernet cable for ease on third party equipment installation



# ATS 380W Trailer with Leonardo ELSAG

- Covert & Semi-Covert Camera Enclosure Box with M7 or M8 Cameras



# ATS 380W Trailer with Leonardo ELSAG

---

Leonardo ELSAG F4 Camera  
System





# ATS 380W Trailer with Motorola LPR

---

L5F - Upfit Kit for Trailer Installation



**ALL TRAFFIC  
SOLUTIONS**



# ATS ALPR Ready with Motorola LPR

---

L6Q with DC power Cable



# Flock-Approved ATS Trailers

---

Flex LPR camera with DC Power  
Kit for Trailer Installation



# ATS ALPR Ready with Insight LPR

Defender-Q LPR Cameras



# ATS ALPR Ready with Mobotix

---

Mobotix M73 Camera



# Surveillance-Ready Trailers

---



# ATS 5 FLEX Trailer

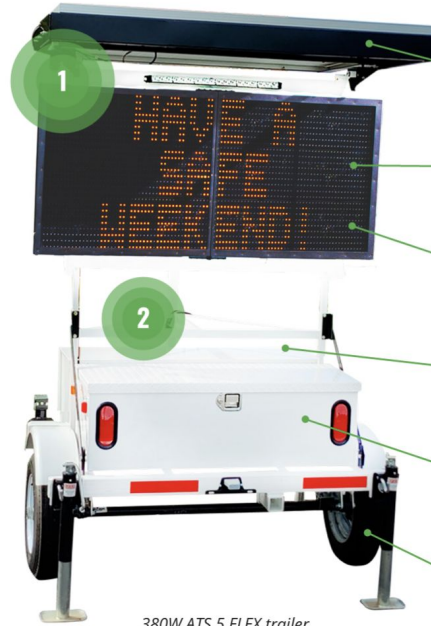
## Powers Other Tech of Your Choice

### OPTIONAL CONFIGURATION LOCATIONS TO MOUNT ADD-ON EQUIPMENT:

1. Crossbar at top of trailer
2. Middle of trailer frame
3. Compartment on back of battery box
4. Trailer hitch



Rear view of trailer



380W ATS 5 FLEX trailer

### KEY FEATURES:

380W or 190W  
Solar Assist

Radar and  
Message Sign

Remote Access  
& Management

Dual Battery Box  
for Extended  
Runtime

Durable Design  
& Build

Highly Mobile for  
Quick Deployment

*Rapidly deploy the tech tools you need wherever you need them, with extended runtime.*

The ATS 5 FLEX Trailer provides a portable solution to power technology such as AI cameras, Sensors, Hazmat Readers, etc.



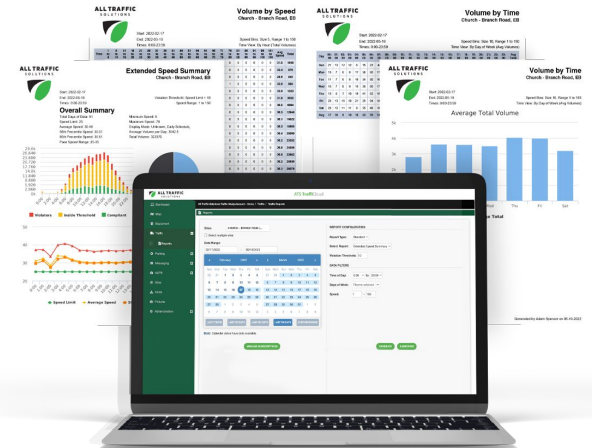
NEW TONIGHT

**ARTIFICIAL INTELLIGENCE TRAFFIC CAMERAS**  
PRINCE GEORGE'S COUNTY CITIES LOOK TO NEW TECH FOR SAFER ROADS

# TraffiCloud®

Save Time by Managing Signs & Data Remotely via a Secure Online Portal

- Schedule and change messages and graphics on all or individual signs
- Equipment Management – GPS tracking, custom user settings
- Set alerts – low battery, tampering, excessive speeding, change in location
- Data collection & reporting – speed, volume, time
- Run and share ready-made reports





# Thank you!

For more information:



866-366-6602



[info@AllTrafficSolutions.com](mailto:info@AllTrafficSolutions.com)



[AllTrafficSolutions.com](http://AllTrafficSolutions.com)

